



Disponibles en
recyclé blanc
& **recyclé**
multicolore

U DE CHANT ET DE SOL

Conçus pour la fixation des panneaux isothermes ou cloisons au sol, les U de sol évitent les ponts thermiques et assurent l'étanchéité en bas de cloison.

Les U de chant assurent une finition soignée des chants de panneaux frigorifiques.

Domaines d'utilisation :

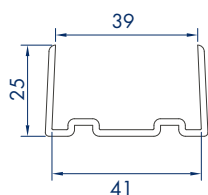
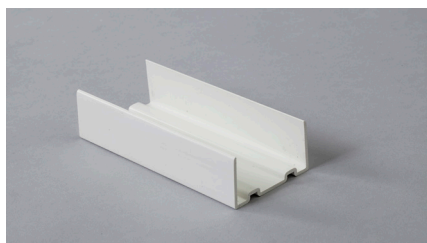
Chambres froides, salles blanches, laboratoires, GSA, abattoirs, laiteries, fromageries, pêcheries, ateliers de découpe, entrepôts de stockage, vente directe et tous les locaux agro-alimentaires.

Bénéfices :

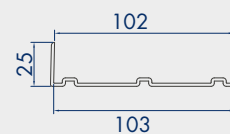
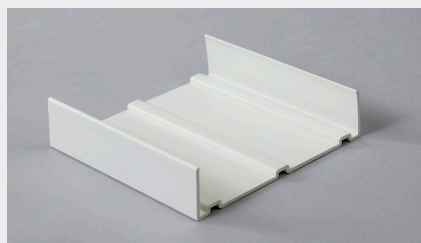
- Inaltérable, imputrescible
- Bonne résistance aux chocs et aux rayures
- Gorges pour étanchéité renforcée sur les U de sol
- Evite les ponts thermiques, et la corrosion en bas de cloison
- Finition soignée, conseillée avec notre gamme de plinthes

U DE SOL SYMÉTRIQUES

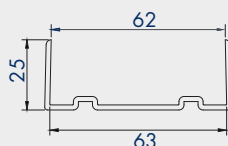
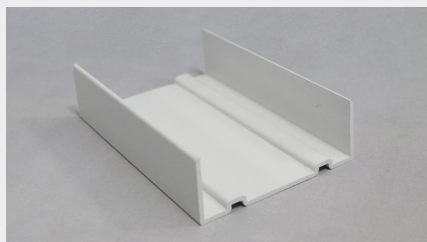
U de sol 40 mm



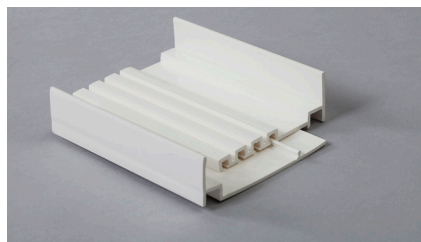
U de sol 100 mm



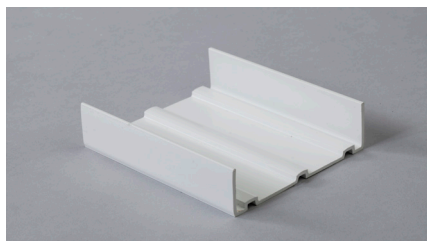
U de sol 60 mm



U de sol 90 à 120 mm



U de sol 80 mm



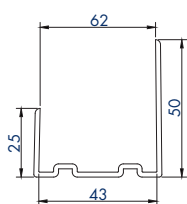
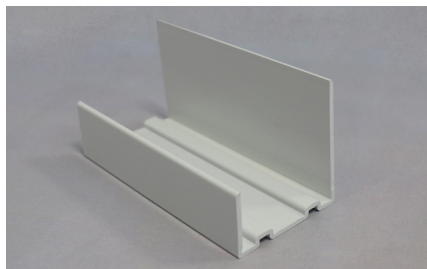


PRODUIT

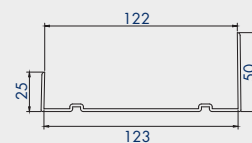
Insertion des panneaux plus aisée.

U DE SOL ASYMÉTRIQUES

U de sol 40 mm

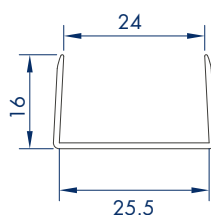


U de sol 120 mm

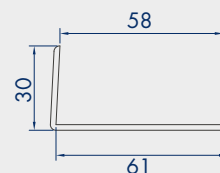


U DE CHANT

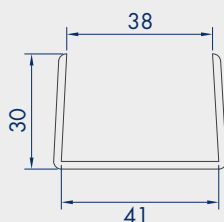
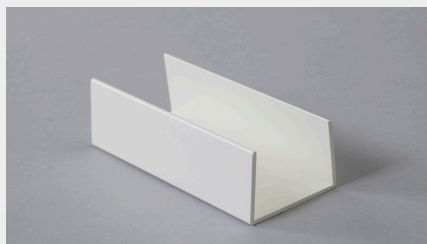
U de chant de 25 mm



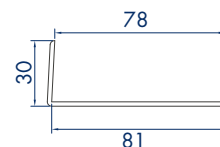
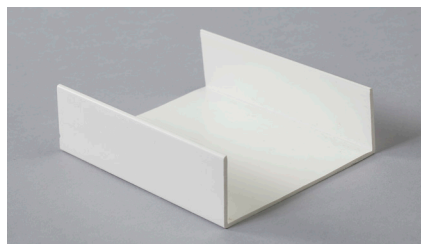
U de chant de 60 mm



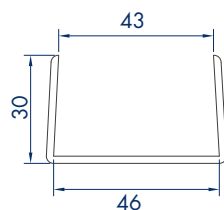
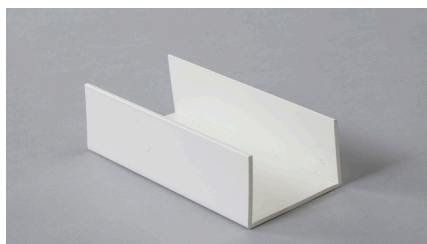
U de chant de 40 mm



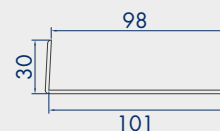
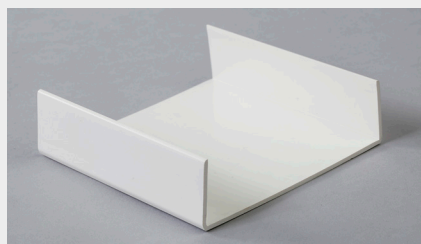
U de chant de 80 mm



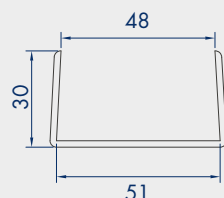
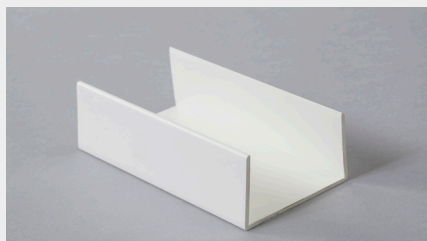
U de chant de 45 mm



U de chant de 100 mm



U de chant de 50 mm



Installation : Voir notice de recommandation de pose sur notre site internet www.maine-peillex.com.

NOUS CONTACTER : service.client@groupe-maine.com

+33 (0)2 43 30 20 79

Groupe MAINE
mp

Etre bien entouré, c'est essentiel

